

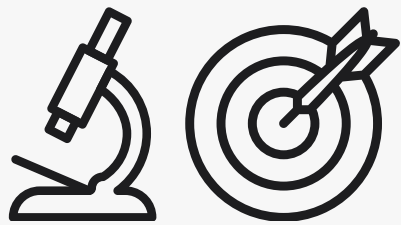


# REWIRED AI

---

Integrated AI for Biomedical Image Analysis

# THE PROBLEM



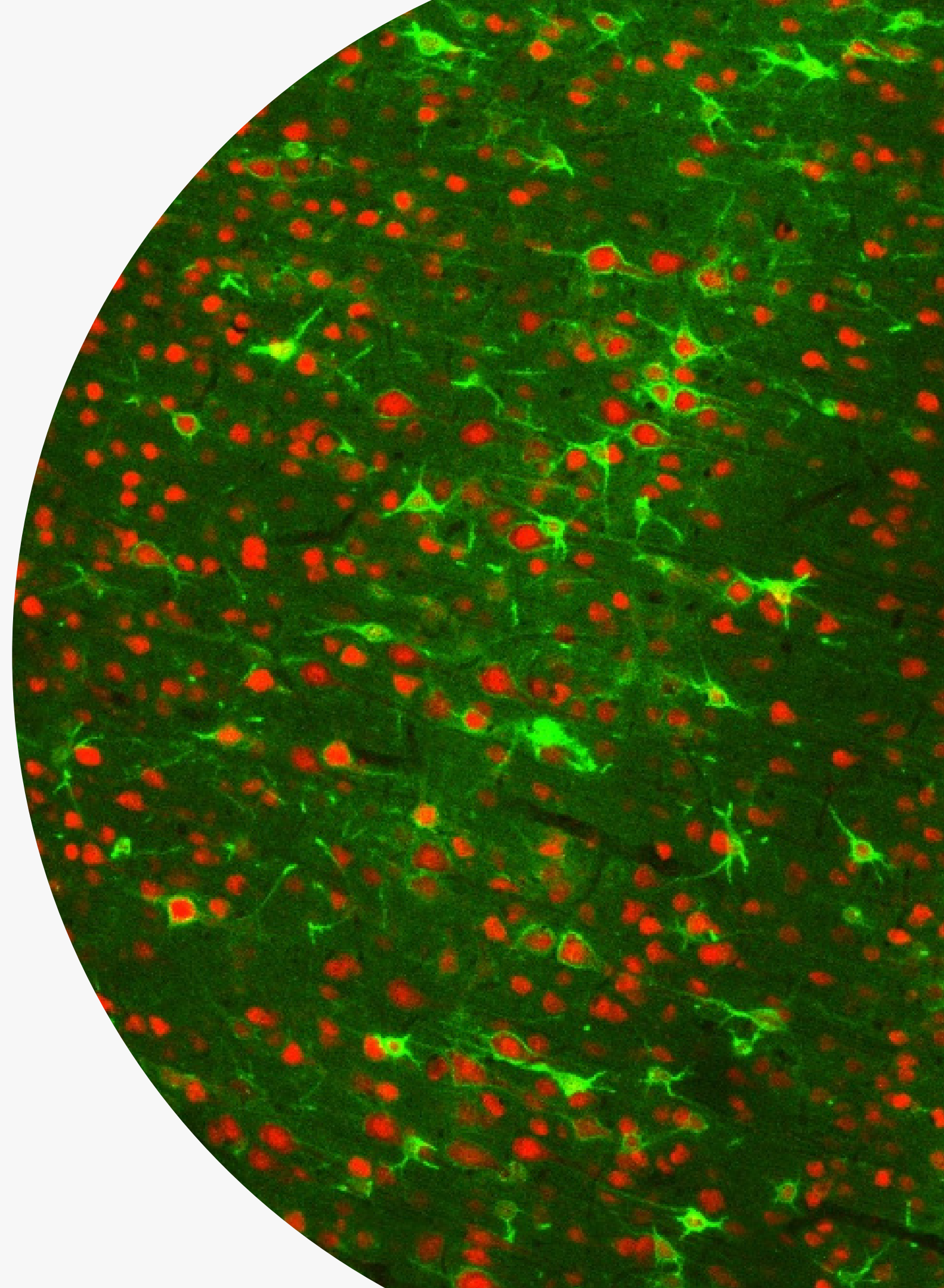
**Scientific  
discovery  
requires  
accuracy and  
efficiency**

---

Developing cell  
detection technology is  
**time and labor intensive**

Accurate AI requires  
**mountains of training  
data**

Traditional AI presents  
**“last-mile” problem**

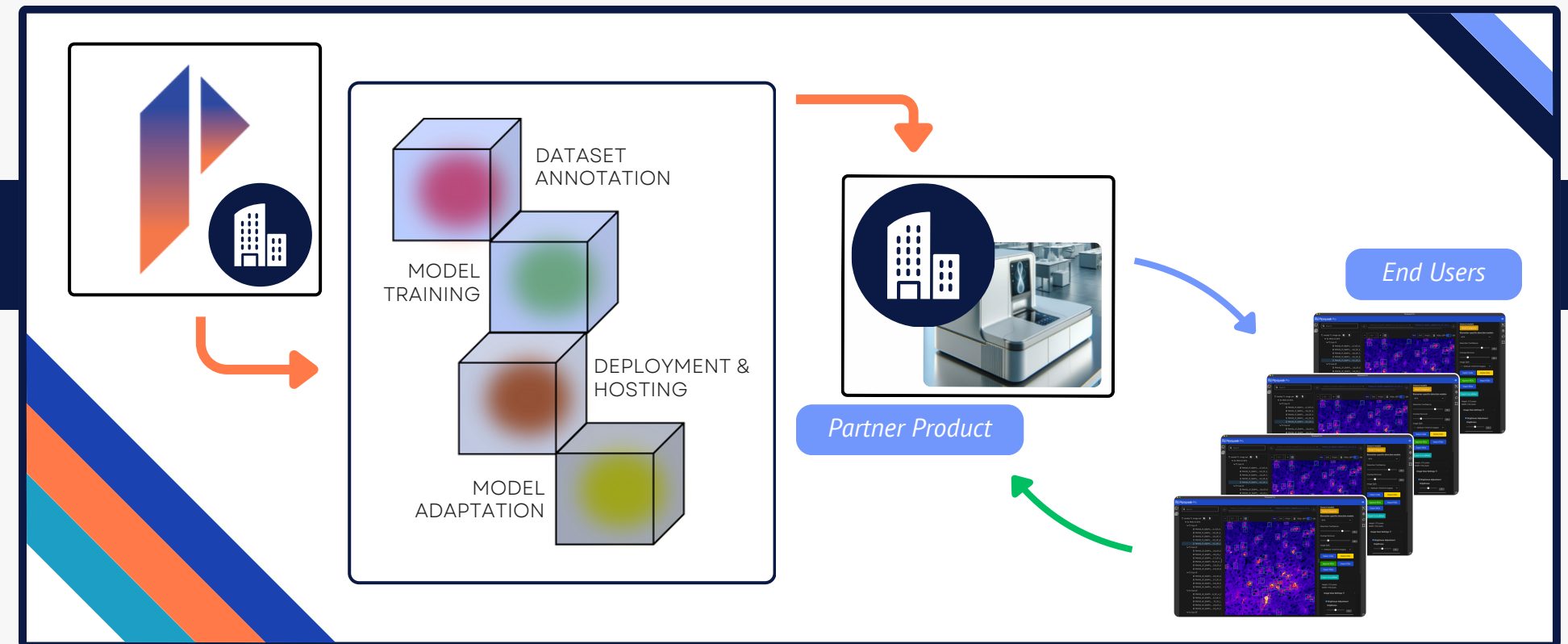


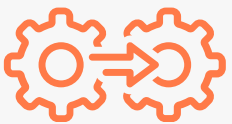



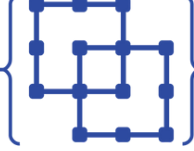
# OUR ANSWER

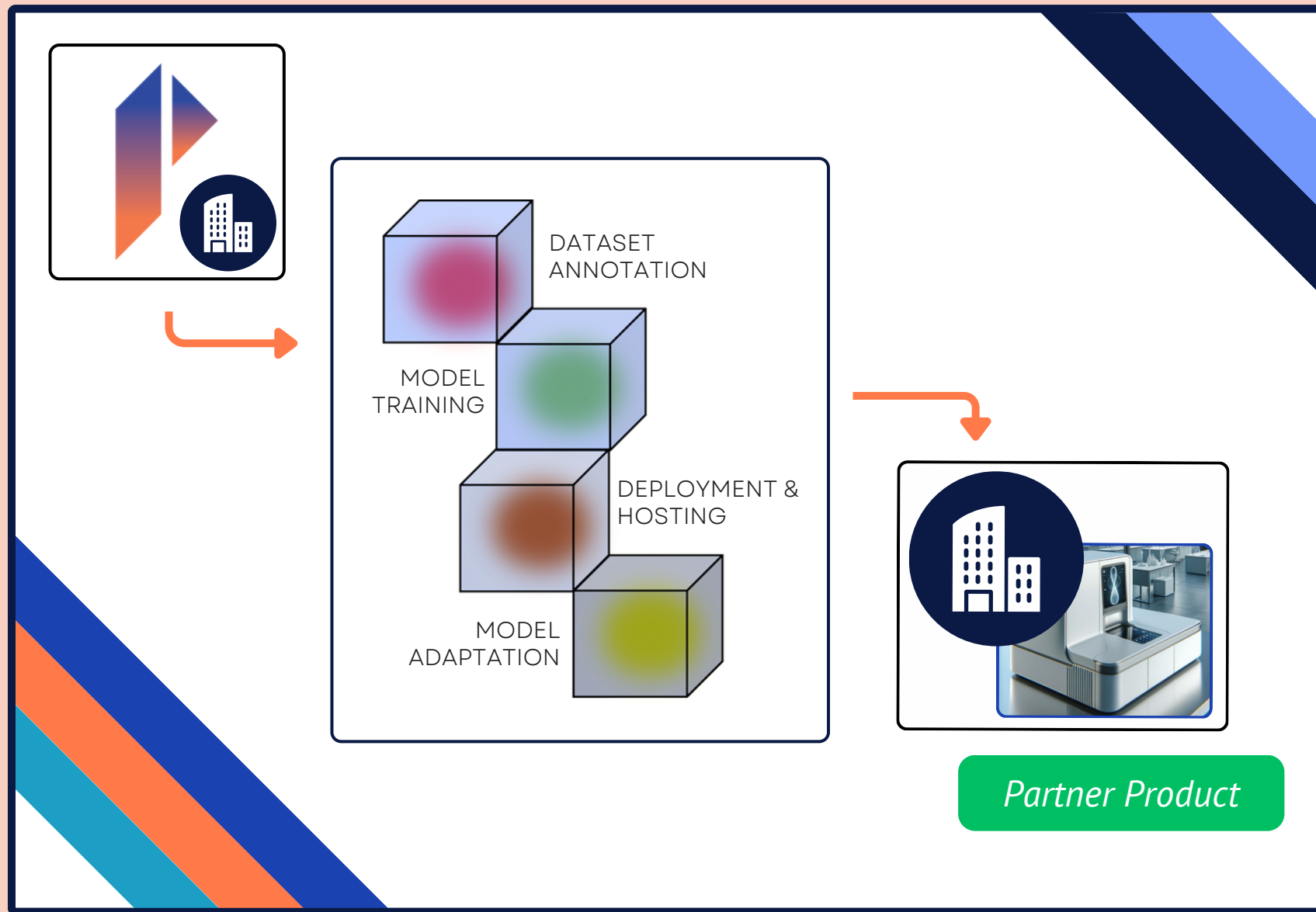
## An end-to-end solution for automated image analysis.

Rewire's cloud-based, turn-key machine learning operations platform, called **Polygon AI**, makes it possible for partners to **automate AI model generation and integration** of AI capabilities into hardware and software products.

Polygon AI provides partners a **white-labeled environment** to enable end-users to further fine-tune, customize, and deploy AI models for their specific needs. Partners benefit from a **simplified ML Ops pipeline, strengthened on-going customer relationships, and generation of recurring revenue** from retail licensing of Polygon AI.



 <b>IMPLEMENTATION</b> <ul style="list-style-type: none"><li>• User Account Creation and Technical Onboarding</li><li>• Polygon AI Interface License</li><li>• AutoML Server Access</li></ul>	 <b>INTEGRATION</b> <ul style="list-style-type: none"><li>• Semi-Automated Image Annotation</li><li>• Deep ML Model Training</li><li>• Easy On-Device Deployment</li></ul>	 <b>LICENSING</b> <ul style="list-style-type: none"><li>• White-Labeled End-User Interface</li><li>• Detection Model Fine-Tuning</li><li>• Model User Account-Specific Model Access</li></ul>	 <b>POLYGON AI</b> BY REWIRE  <b>SIGHTOLOGIST.AI</b> BY REWIRE
---	--	---	---



**Polygon AI is built to be modular and adaptable.** Partners will be provided all necessary software keys, tools, and AutoML server access for complete adoption of Polygon AI into their ML workflow. This includes a compatibility with a selection of API endpoints and model-export functionality for proper device integration.

Once properly onboarded, our patented, cloud-based AutoML technology along with Polygon AI's intuitive interface allows for **semi-automated generation of training image annotations, automated deep machine learning, and easy deployment of the trained models onto the partner's product.**

## **IMPLEMENTATION & INTEGRATION**







Partners may offer end-users access to a **white-labeled Polygon AI interface** in order to provide the ability to further fine-tune models with additional image annotation and automated machine learning.

End-user models can then be deployed into the partner's product for user account-specific availability. By providing end-users with customized AI capabilities, partners are able to deliver on the promise of effective and accurate AI in a multitude of user-specific conditions, while also **strengthening the customer relationship beyond the initial sale.**

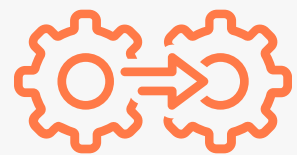
Additionally, retail subscriptions of end-user Polygon AI licenses provides partners with an optional **recurring revenue stream that supports and rewards customer retention.**

## **LICENSING & USER FINE-TUNING**



# EXAMPLE PARTNERSHIP

---



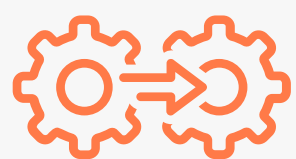
One of our current partnerships is with a hardware company that was experiencing issues with quantification on their liquid biopsy cell counter.



*\*stock image, not the actual device*

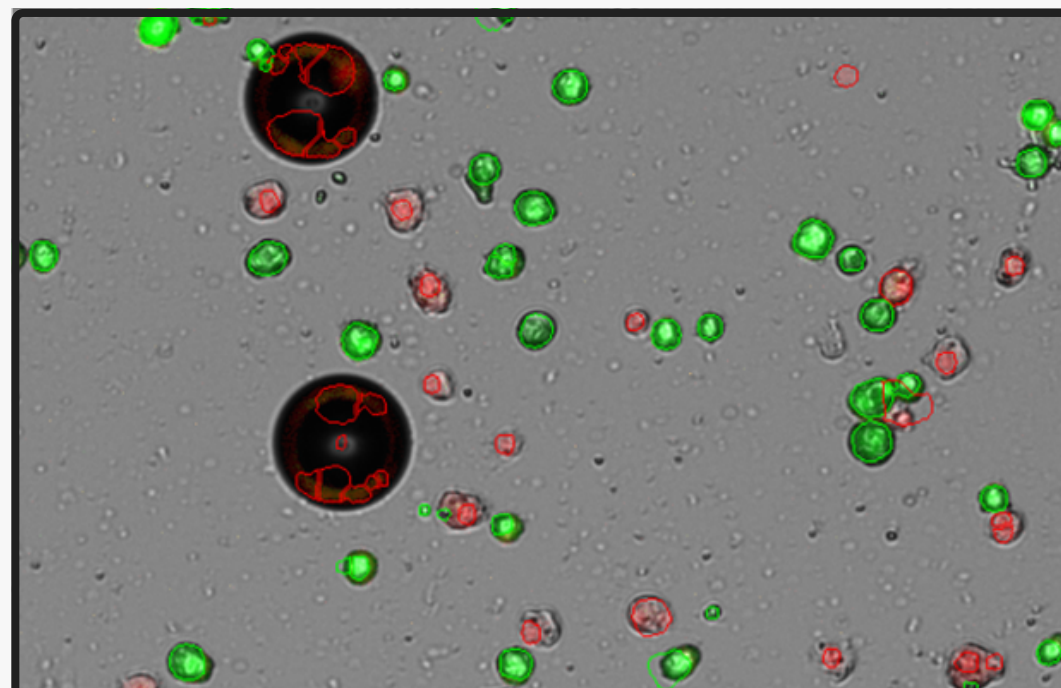


# EXAMPLE PARTNERSHIP



After initial “hands-on” **implementation**, the company used the Polygon AI platform with their images to build a model, then deployed it on-device.

We provide onboarding and technical support throughout the partnership, and can deliver additional tools and functionality through service contracts, as needed.



## Before Rewire

False positives / negatives, overlapping cells, misclassified cells, and poor detection.

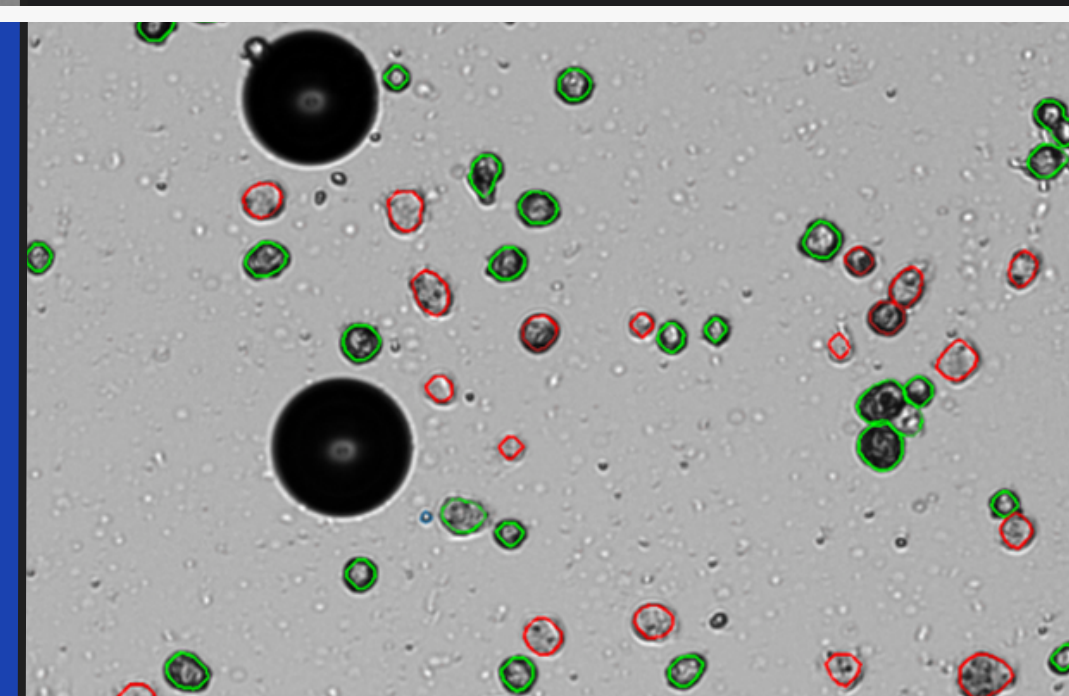


+

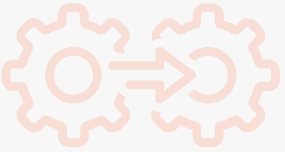


## After Rewire

Error-free classification, segmentation of touching cells, and accurate detection.

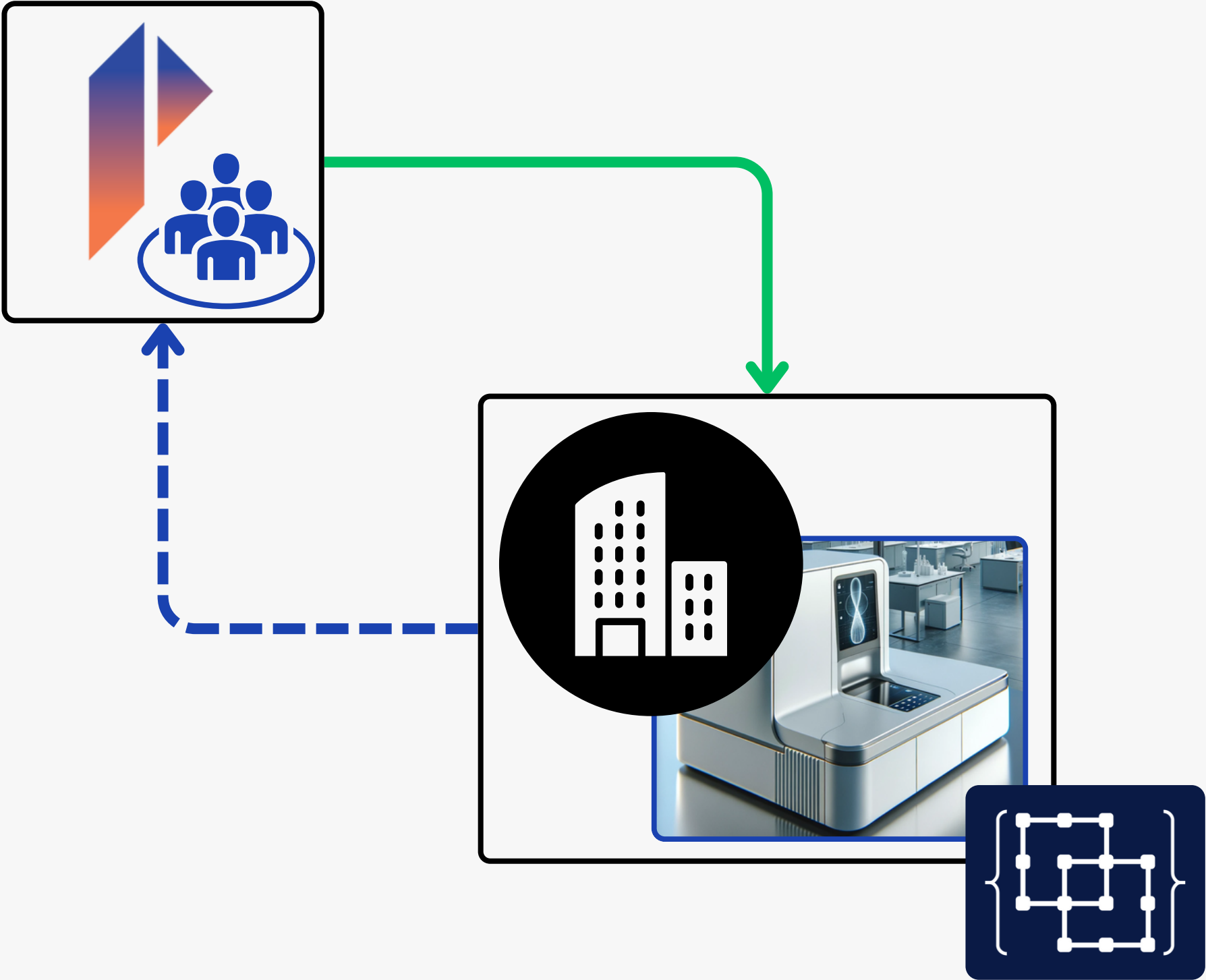


# EXAMPLE PARTNERSHIP

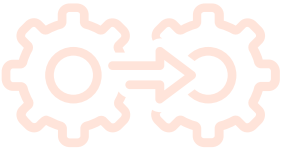


Once fully **integrated**, the company could continue to use Polygon AI for additional machine learning operations.

Our cloud-based computing platform reduces the hardware requirements for ML development and enables an automated ML ops pipeline.

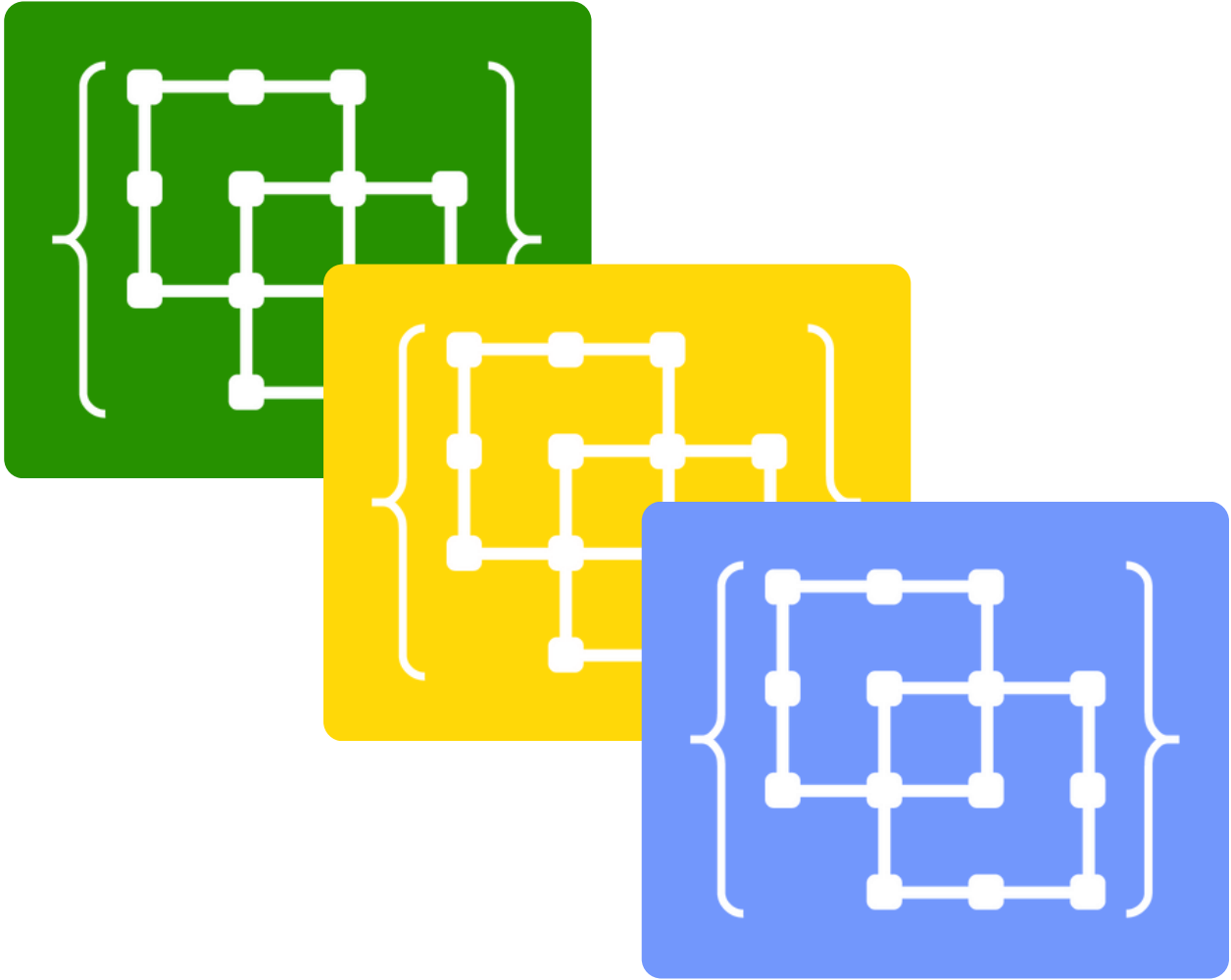
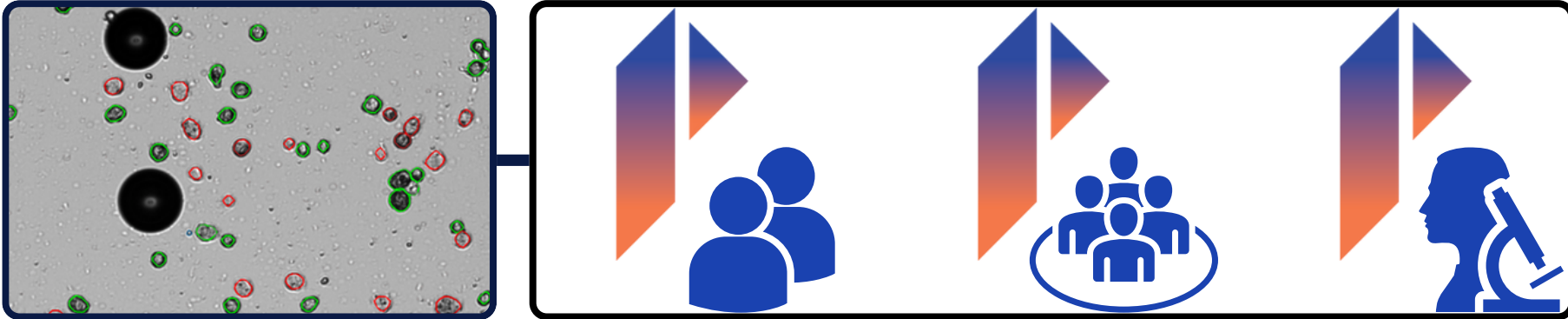


# EXAMPLE PARTNERSHIP



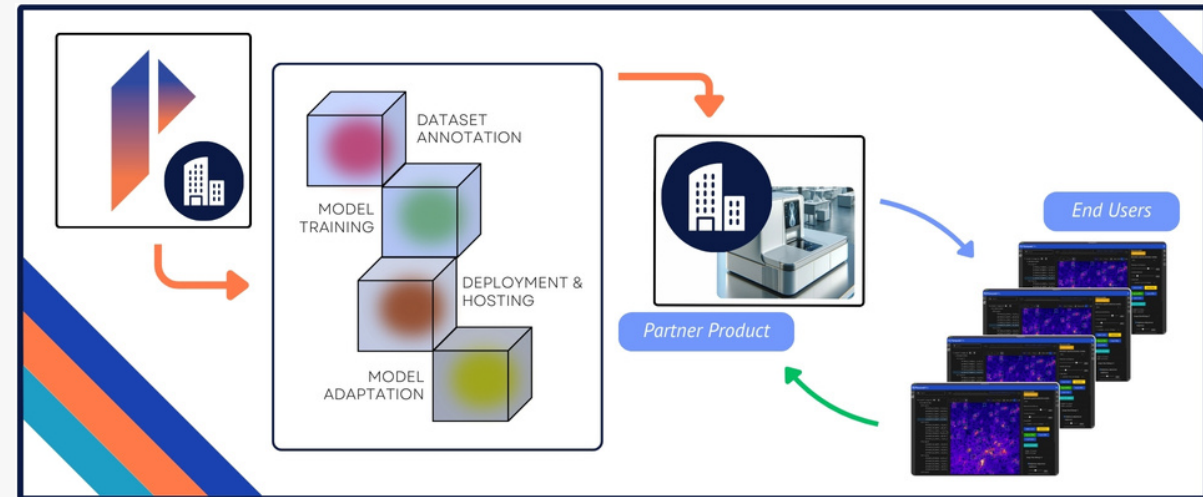
By adding value to their already existing product, we help open up new and recurring revenue opportunities through **licensing** of the Polygon AI end-user interface.

End users are able to refine foundational models and use customized detection capabilities.





# VALUE SUMMARY



## **FOR PARTNER**

- Recurring Revenue Opportunities
- Strengthened Customer Relationship
- Simplified ML Ops Pipeline
- Improved User Insights and Data

## **FOR END USER**

- Easy-to-Use Annotation Interface
- AI for Fast and Accurate Detection
- Cloud-Based Workflow Synchronization
- Detection Model Fine-Tuning



## BY THE NUMBERS

---

Researchers and companies that use Rewire solutions have experienced better data accuracy, significant reduction in analysis time, and less image analysis-related costs.

**97%**

Reported data accuracy from Rewire AI solutions\*

**2500x**

Faster analysis than other documented workflows\*

**up to 50%**

Less overall cost compared to other solutions\*

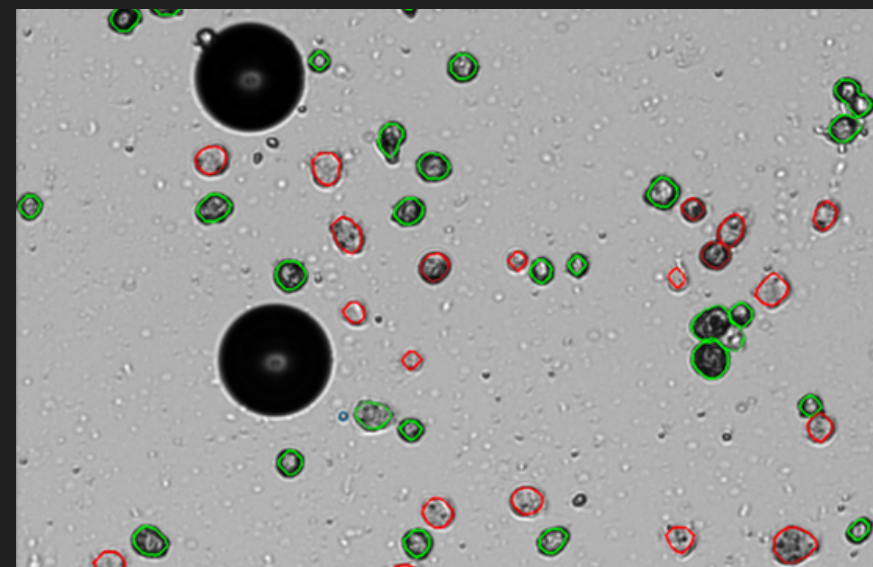
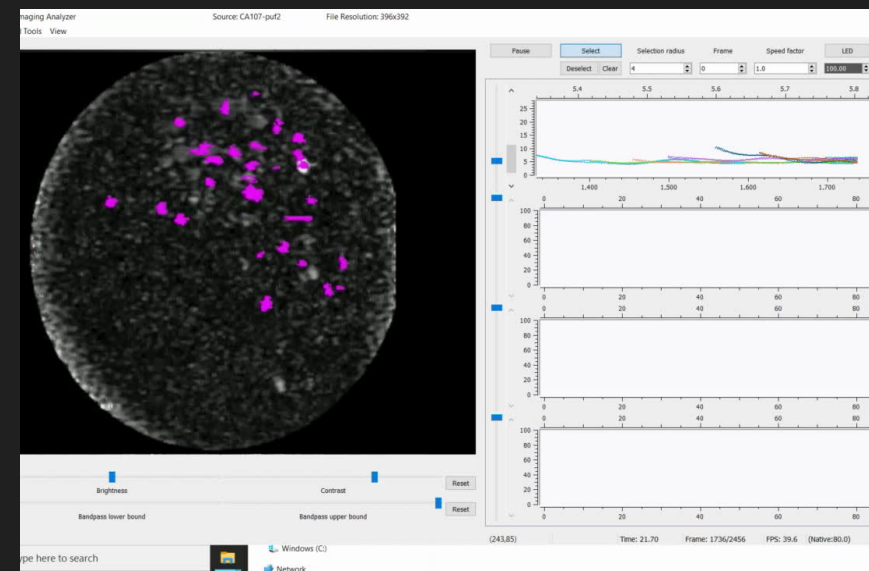
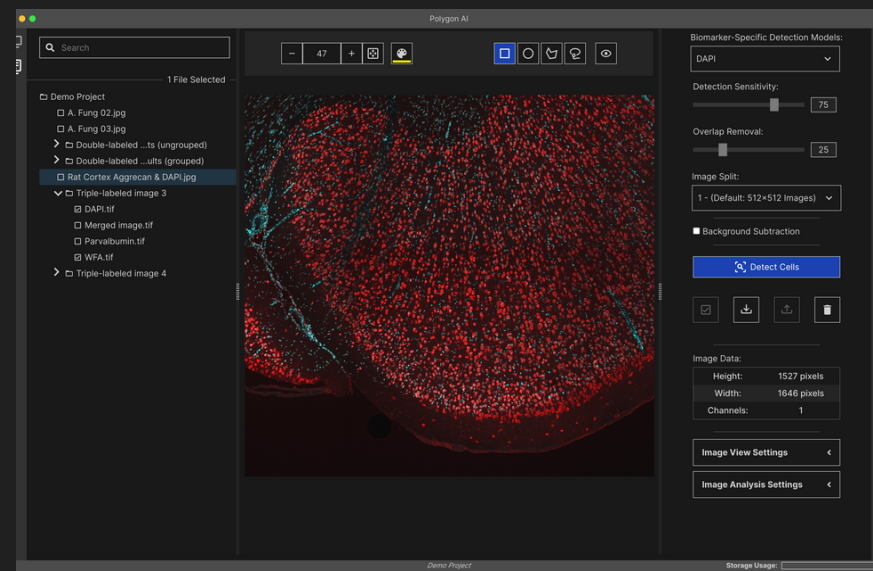
**over 1.2 Billion**

Proprietary training objects



# WHY REWIRE

Patented, Adaptive, Low-Risk



5+ OEM Partner or Service Relationships  
and over 3,000 Software Downloads

Diverse, Adaptable, and Accurate  
Detection Models

Deliverable Ownership & Visible  
Endpoints







**REWIRE** AI

Integrated AI for Biomedical Image Analysis



## ***FOR MORE INFORMATION:***



---

Dr. John Harkness, CEO  
john@rewire.ai



---

rewire.ai



---

@rewireai

